

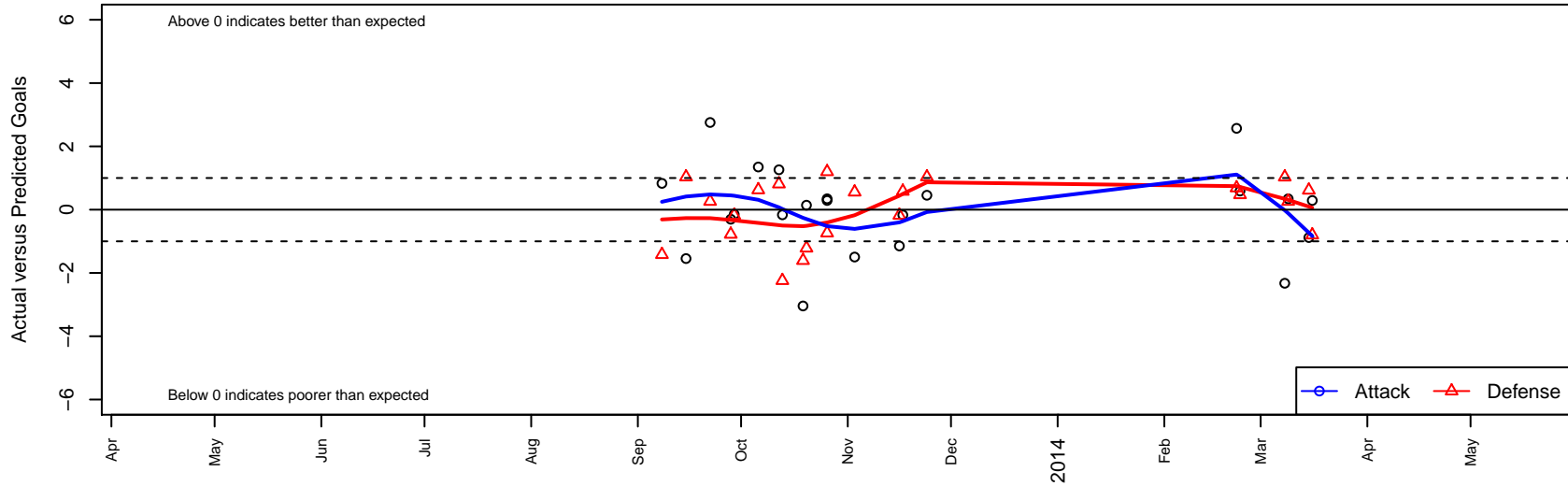
Los Angeles Futbol Academy Black B01

Los Angeles Futbol Academy
 Los Angeles, CAS
 B01 total strength=1257
 attack=5.36 defense=4.42
 fall league = SCDL FI1 U12
 alt names used:
 Los Angeles Futbol Academy Black
 Lafa – BU12 Black

Venues played:
 SCDL FI1 U12
 SoCal DL Fall Showcase Flight 1 U12
 SoCal National Cup B01



Los Angeles Futbol Academy Black B01
 Dots are actual minus expected GF (blue circles) and GA (red triangles).
 Blue line is smoothed change in attack strength. Red is smoothed change in defense strength.



| | date | home | | away | | venue | pred.home | pred.awa |
|------|-------------|--------------------------------------|---|--------------------------------------|---|-------------------------------------|------------------|-----------------|
| 1920 | 2014-03-16 | Los Angeles Futbol Academy Black B01 | 1 | San Diego Surf SC Academy I B01 | 2 | SoCal National Cup B01 | 0.71 | 1.20 |
| 1584 | 2014-03-15 | Los Angeles Futbol Academy Black B01 | 2 | Strikers FC South Coast B01 | 0 | SoCal National Cup B01 | 2.88 | 0.61 |
| 1235 | 2014-03-09 | Los Angeles Futbol Academy Black B01 | 2 | San Diego Surf SC Premier I B01 | 1 | SoCal National Cup B01 | 1.66 | 1.26 |
| 3921 | 2014-03-08 | Los Angeles Futbol Academy Black B01 | 0 | Fullerton Rangers White B01 | 0 | SoCal National Cup B01 | 2.33 | 1.03 |
| 3225 | 2014-02-23 | LA Premier B01 | 0 | Los Angeles Futbol Academy Black B01 | 6 | SoCal National Cup B01 | 0.47 | 5.41 |
| 1962 | 2014-02-22 | Pateadores Irvine White B01 | 0 | Los Angeles Futbol Academy Black B01 | 7 | SoCal National Cup B01 | 0.69 | 4.43 |
| 3316 | 2013-11-24 | Los Angeles Futbol Academy Black B01 | 2 | FC Los Angeles Black B01 | 0 | SCDL F11 U12 | 1.55 | 1.03 |
| 3751 | 2013-11-17 | LA Galaxy Academy North B01 | 1 | Los Angeles Futbol Academy Black B01 | 1 | SCDL F11 U12 | 1.58 | 1.17 |
| 3460 | 2013-11-16 | LA Galaxy South Bay Gold B01 | 1 | Los Angeles Futbol Academy Black B01 | 3 | SCDL F11 U12 | 0.82 | 4.15 |
| 7224 | 2013-11-03 | Los Angeles Futbol Academy Black B01 | 1 | FRAM Premier B01 | 0 | SCDL F11 U12 | 2.50 | 0.55 |
| 3864 | 2013-10-26 | San Diego Surf SC Academy I B01 | 0 | Los Angeles Futbol Academy Black B01 | 1 | SoCal DL Fall Showcase Flight 1 U12 | 1.20 | 0.71 |
| 3876 | 2013-10-26 | Los Angeles Futbol Academy Black B01 | 2 | San Diego Surf SC Premier I B01 | 2 | SoCal DL Fall Showcase Flight 1 U12 | 1.66 | 1.26 |
| 3308 | 2013-10-20 | Los Angeles Futbol Academy Black B01 | 5 | Exiles SC Black B01 | 2 | SCDL F11 U12 | 4.86 | 0.78 |
| 1938 | 2013-10-19 | FC Golden State Gold B01 | 2 | Los Angeles Futbol Academy Black B01 | 2 | SCDL F11 U12 | 0.39 | 5.04 |
| 1334 | 2013-10-13 | Los Angeles Futbol Academy Black B01 | 1 | LA Galaxy Academy South B01 | 4 | SCDL F11 U12 | 1.16 | 1.76 |
| 3883 | 2013-10-12 | Santa Barbara SC White B01 | 0 | Los Angeles Futbol Academy Black B01 | 5 | SCDL F11 U12 | 0.81 | 3.74 |
| 3296 | 2013-10-06 | Manhattan Beach Sand and Surf B01 | 0 | Los Angeles Futbol Academy Black B01 | 5 | SCDL F11 U12 | 0.63 | 3.65 |
| 1331 | 2013-09-29 | Los Angeles Futbol Academy Black B01 | 4 | LA Galaxy South Bay Gold B01 | 1 | SCDL F11 U12 | 4.15 | 0.82 |
| 1926 | 2013-09-28 | FC Golden State Academy B01 | 2 | Los Angeles Futbol Academy Black B01 | 1 | SCDL F11 U12 | 1.22 | 1.30 |
| 1398 | 2013-09-22 | Los Angeles Futbol Academy Black B01 | 5 | Real So Cal White B01 | 1 | SCDL F11 U12 | 2.25 | 1.26 |
| 7431 | 2013-09-15 | FC Los Angeles Black B01 | 0 | Los Angeles Futbol Academy Black B01 | 0 | SCDL F11 U12 | 1.03 | 1.55 |
| 474 | 2013-09-08 | Los Angeles Futbol Academy Black B01 | 2 | LA Galaxy Academy North B01 | 3 | SCDL F11 U12 | 1.17 | 1.58 |